

COMMUNITY BENEFIT PROGRAM

Swedish Health Services

COMMUNITY HEALTH NEEDS ASSESSMENT



Health care Access and Delivery



Food Insecurity and Access



Support for Children and Youth



Equity and Social Determinants of Health

OUR MISSION

Improve the health and well-being of each person we serve

OUR VISION

Health for a better world

OUR VALUES

Compassion
Justice
Excellence
Dignity
Integrity
Safety

OUR COMMITMENT

Improve the health of the region beyond normal patient care.

REINVESTING IN THE COMMUNITY

In the last 10 years, Swedish Health Services spent close to \$2 billion in community benefit. We are making investments that go beyond the need for free and discounted care by promoting equity, improving access to care and building relationships to help people stay healthy.

In 2023, we spent more than \$299 million on community benefit programs, including \$32 million supporting free and discounted care.

ACCESS TO CARE

In 2023, Swedish provided access to 87,537 Medicaid patients.

PROVIDING FINANCIAL ASSISTANCE

Our charity care program provides a 100% financial discount to individuals and families between 0-300% of the federal poverty level.

Full charity for family of four (up to 300%)		Partial (301 - 400%)	
2020	\$78,600 or less	2020	\$78,601 - \$104,800
2021	\$79,500 or less	2021	\$79,501 - \$106,000
2022	\$83,250 or less	2022	\$83,251 - \$111,000
2023	\$90,000 or less	2023	\$120,000
2024	\$93,600 or less	2024	\$93,601 - \$124,800

\$299 million on community benefit programs

Access to 87,537 Medicaid patients

100% financial discount to individuals and families between 0-300% of the federal poverty level

By the numbers

2023 COMMUNITY BENEFIT ACROSS SWEDISH HEALTH SERVICES

\$208 million

Unpaid cost of Medicaid and other means-tested government programs: This is the difference

between the actual cost of care and what is paid by the state and federal government. It does not include Medicare.



\$32 million

Free and discounted medical care for patients in need: This is

financial assistance for those who are uninsured, underinsured or otherwise unable to pay for their health care.



\$35 million

Health professions, education and research: These are subsidies

for medical residency programs, nursing and other education, and medical research.



\$14 million

Subsidized health services: This

includes clinical and social services provided despite a financial loss because they meet identified needs not met elsewhere in the community.



\$10 million

Community health improvement and strategic partnerships:

This reflects free services, such as patient education, health screenings, immunizations and support groups as well as donations to community partners.



COMMUNITY BENEFIT BY CAMPUS:

Ballard	\$19 million
Cherry Hill	\$38 million
Edmonds	\$45 million
First Hill	\$134 million
Issaquah	\$22 million
Mill Creek	\$12 million
Redmond	\$3 million
Swedish Medical Group	\$26 million
JV PET/CT	\$94 thousand
SHS Shared Services	\$9 thousand

***These figures and totals represent Swedish Health Services facilities in Providence Swedish's Central Puget Sound service area (Swedish First Hill, Cherry Hill, Ballard, Issaquah, and Redmond) and North Puget Sound service area (Swedish Edmonds and Mill Creek).



Community health needs assessment

Providence Swedish will be a partner in addressing the priorities elevated by King County communities by directing these community benefit activities in the coming years:

- **Health care access and delivery (emphasizing mental and behavioral health for youth and adults)** – Mental and behavioral health needs stand out among all local hospitals and health systems, specifically related to access to services. This includes identifying ways to improve awareness of and access to mental health services for adults, children and youth. Hospitals also recognize the impact of the opioid crisis and its intersection with each of the other priorities.
- **Equity and social determinants of health** – King County communities highlighted inequitable access to services and resources, as well as the impacts of racism, bias, and discrimination on diverse communities. Several reports specifically highlighted challenges attaining economic security, gaining employment, and accessing culturally appropriate and respectful health. The effects of COVID-19 continues to emphasize the impacts of poverty and economic insecurity, unemployment and underemployment, language barriers, systemic racism, and discrimination on community health.
- **Food insecurity and access** – Every family should have access to convenient and affordable means of purchasing healthy food. When access is limited, people are more likely to rely on less nutritious options. Food insecurity, or the lack of access to sufficient food for every household member, is an economic and social indicator of community health. Several factors can affect food access and security, including poverty, low income, and unemployment, among others.
- **Support for children and youth** – Support for children and youth includes supporting families to provide healthy conditions for them to thrive. The impacts of closures of schools, child care, and recreational facilities; learning disruptions; and economic hardship affected parents' ability to provide the best opportunities for their children during the pandemic and will have long-term effects on their learning and development.

Community partnerships

Swedish supports the vital work of local agencies and organizations whose efforts further impact the work that we do to find innovative, equitable and measurable ways to reduce health care costs and improve the health and quality of life in our communities. Some, not limited to, are highlighted here.



How we care and partner

REAL CHANGE

Real Change exists to provide opportunity and a voice to low-income and homeless people while taking action for economic, social and racial justice. Its focus areas are jobs, journalism, and justice. Partnership with Providence Swedish supports their mission in offering the lowest barrier to entry jobs in the region and connecting over 160 people to services and reliable income earning opportunities.

JOBS: Anyone who wants to work can come to the Vendor Center and leave the same day with a job selling Real Change News. No ID, background or reference check, resume, or even an address is required to participate in the Vendor Program. Vendors get their first 10 papers for free and sell them for \$2 each; they pay \$.60 per paper thereafter. All profits from paper sales go directly into their pockets. They can also accept tips, and many customers voluntarily pay above and beyond the cover price to support their local vendor, which results in the papers ultimately selling for about \$5 each on average.

The Vendor Center is a community and resource hub – vendors have access to services including food assistance, service referrals, medical and veterinary care, mailboxes, a computer lab, and so much more.

JOURNALISM: Real Change News is far more than something tangible for those in need of work to sell, it's an award-winning weekly that's earned its place as a leader in local independent news media. Real Change News informs and offers a valuable perspective on local issues that centers on the voices of those with lived experience of homelessness and poverty. It also covers arts and culture, community events, and more.

JUSTICE: The advocacy team addresses immediate needs while working toward long-term systems change, like their recent social housing initiative, which made history when it was approved by Seattle voters.



NORTHWEST HOPE & HEALING

Northwest Hope & Healing serves patients undergoing treatment for breast or gynecologic cancer in the Puget Sound region by providing immediate assistance, community, and ongoing survivor support. Grants from their program are delivered to patients experiencing financial hardships immediately, without applications or lengthy wait times. These grants include gift cards for groceries and gas as well as financial assistance for everyday basics such as rent, utilities, child care, and other bills.



With Providence Swedish's support, Northwest Hope & Healing allows patients to focus on their treatment by alleviating some of the financial stresses of bills and everyday living expenses. The assistance offered throughout the patient's treatment can be invaluable for those who do not have extensive financial or emotional support systems to rely on through family or friends. A grant recipient expresses this, "I received my Healing Box today. It's a wonderful feeling receiving the box. The items let me know there's a little bit more love in this world. Thank you for the lovely gifts. They brought tears, hope and happiness and say that I'm not alone."

In 2023, Northwest Hope & Healing assisted 313 patients, including 55 patients with children. Through our partnership and generous support of Providence Swedish, the foundation can persist in positively impacting the lives of cancer patients in the local community. Northwest Hope & Healing is committed to ensuring that every cancer patient receives the essential elements of security, community, and hope for the future. To learn more, please visit nwhopeandhealing.org.

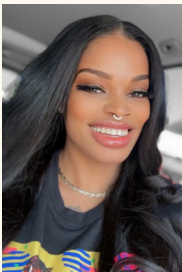
RENTON TECHNICAL COLLEGE

In 2023, 12 students of color were awarded the Providence Swedish scholarship. These students were enrolled in pre nursing, LPN, pharmacy, and surgical technology coursework.

From one of the students: "My mother is an immigrant who moved here as an adult from Puerto Rico with an 8th-grade education. She grew up in poverty and raised her children in poverty. I started working when I was 15 to help pay for our rent. I remember my senior year in high school living in a one-bedroom studio apartment with my mom and two other siblings. I slept on a sofa my mother found on the streets of New Jersey. Starting college was going to be my opportunity to overcome my life circumstance. I began my journey at a community college because it's what I could financially afford. During that time, I lost two important family figures to cancer. The man who helped raise me and my aunt who was like a second mother to me. This was the first time I experienced such loss, causing me to drop out of school and lose myself for several years afterward.

As the first in our family to attend college, graduating will be a tribute to them. I hope to help my daughters achieve their educational goals and to be the best mother/role model I can be. I look forward to one day purchasing a home and establishing my retirement."

Providence Swedish was also honored with a Corporate Partner Recognition Award for its unwavering commitment to supporting students who pursue careers in health care.



About Providence Swedish

PROVIDENCE SWEDISH. TOGETHER, FOR YOU.

As Swedish Health Services has evolved and affiliated with Providence to become Providence Swedish, our vision to provide the highest-quality health care for the best value remains unchanged. This means the same great care will be available with more resources and locations to care for you and your family.

Providence Swedish is more than a hospital; it's a powerful network of skilled physicians, award-winning care centers, advanced clinical research, and breakthrough treatments. It's world-class care, from people who care for you. And now that we are combining our networks, we'll be able to offer more exceptional care to you where and when you need it.

OUR ECONOMIC CONTRIBUTION TO THE COMMUNITY

Swedish Health Services has grown to become the largest not-for-profit health provider in the greater Seattle area.

- 13,554 caregivers (employees)
- 3,731 physicians, APCs and allied health professionals
- 1,571 licensed beds
- Our caregivers logged over 12,000 hours serving on boards, holding donation drives and volunteering with many of our partners and other non-profits to demonstrate how we care beyond our walls and commit to the well-being of our communities.

WE HAVE:

- Five legacy Swedish hospital campuses (First Hill, Cherry Hill, Ballard, Edmonds and Issaquah)
- An emergency room and specialty center in Redmond (East King County) and the Mill Creek area in Everett
- Providence Swedish Medical Group, with 194 primary and specialty care locations (155 specialty, 10 pediatrics, 29 primary care)
- Affiliations with suburban hospitals and physician groups

PROVIDENCE SWEDISH COMMUNITY BENEFIT PROGRAM

747 Broadway
Seattle, WA 98122
206-386-6000

swedish.org

We do not discriminate on the basis of race, color, national origin, sex, sexual orientation, gender identity or expression, age, or disability in our health programs and activities.

ATENCIÓN: Si habla español, tiene a su disposición servicios gratuitos de asistencia lingüística. Llame al 888-311-9127 (TTY:711)

注意：如果您講中文，我們可以給您提供免費中文翻譯服務，請致電 888-311-9127 (TTY:711)

COMM-23-0099 Rev 4/24



FIRST HILL



CHERRY HILL



BALLARD



EDMONDS



ISSAQUAH